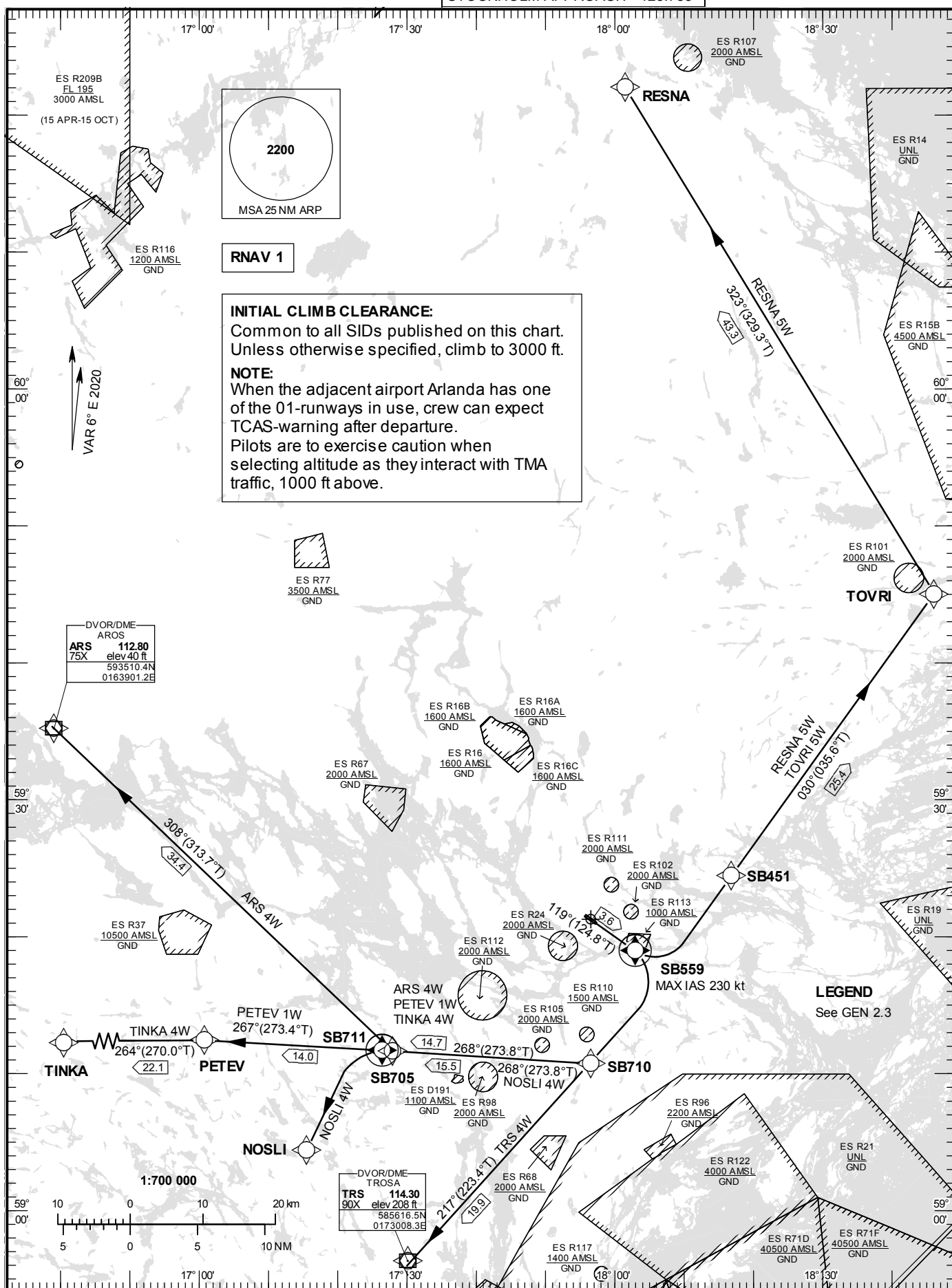


STOCKHOLM/Bromma
RNAV (GNSS) SID RWY 12

**STANDARD INSTRUMENT
DEPARTURE CHART (SID) -
ICAO**

HGT and ALT in ft
BRG are MAG (True)
TA 5000 ft AMSL

BROMMA TOWER	118.105
BROMMA ATIS	122.455
STOCKHOLM APPROACH	123.755



CHANGE: Editorial

STOCKHOLM/Bromma**Prescribed Coding of RNAV SID for RWY 12**

Note:

INITIAL CLIMB CLEARANCE: Climb to 3000 ft unless otherwise specified. Common to all SIDs published on charts.

Aircraft proceeding on RNAV SID shall use 400 ft per NM (6.6%) as a minimum gradient of climb up to 3000 ft AMSL. Aircraft unable to conform with this procedure shall inform ATS accordingly.

ACFT unable to follow RNAV SID: Report “unable RNAV SID due RNAV type” to Clearance Delivery and “unable RNAV SID” to STOCKHOLM APPROACH/DEPARTURE on frequency indicated below at first contact.

Aircraft from STOCKHOLM/Bromma shall not be operated at an airspeed of more than 250 kt IAS below FL100 unless otherwise instructed.

For ARS 4W, NOSLI 4W, PETEV 1W, TINKA 4W, TRS 4W: At 1500 ft, unless otherwise instructed, contact STOCKHOLM APPROACH on frequency indicated below.

For RESNA 5W, TOVRI 5W: At 1500 ft, unless otherwise instructed, contact STOCKHOLM DEPARTURE on frequency indicated below.

ARS 4W

Path Term	Waypoint Identifier	Fly-over	Course °M(°T)	Dist (NM)	Turn Dir	Rest Alts (ft AMSL)	Speed Limits (kt)	VPA/ RDH (°/ft)	Rec Navaid	Navigation Specification
CF	SB559	Y	119°(124.8°)	3.6	-	-	-230	-	ARL	RNAV 1
DF	SB710	-	-	-	R	-	-	-	-	RNAV 1
TF	SB705	-	268°(273.8°)	14.7	-	-	-	-	-	RNAV 1
TF	ARS	-	308°(313.7°)	34.4	-	-	-	-	-	RNAV 1

SID instruction: Climb on track 119° to SB559 (max IAS 230 kt) – SB710 – SB705 – ARS.**120.155**

ACFT unable to follow RNAV SID: Climb on track 119° to SB DME 4.3 (max IAS 230 kt). Turn right to track 220°. Expect radar vectors to ARS.

NOSLI 4W

Path Term	Waypoint Identifier	Fly-over	Course °M(°T)	Dist (NM)	Turn Dir	Rest Alts (ft AMSL)	Speed Limits (kt)	VPA/ RDH (°/ft)	Rec Navaid	Navigation Specification
CF	SB559	Y	119°(124.8°)	3.6	-	-	-230	-	ARL	RNAV 1
DF	SB710	-	-	-	R	-	-	-	-	RNAV 1
TF	SB711	Y	268°(273.8°)	15.5	-	-	-	-	-	RNAV 1
DF	NOSLI	-	-	-	L	-	-	-	-	RNAV 1

SID instruction: Climb on track 119° to SB559 (max IAS 230 kt) – SB710 – SB711 – NOSLI.**120.155**

ACFT unable to follow RNAV SID: Climb on track 119° to SB DME 4.3 (max IAS 230 kt). Turn right to track 220°. Expect radar vectors to NOSLI.

PETEV 1W

Path Term	Waypoint Identifier	Fly-over	Course °M(°T)	Dist (NM)	Turn Dir	Rest Alts (ft AMSL)	Speed Limits (kt)	VPA/ RDH (°/ft)	Rec Navaid	Navigation Specification
CF	SB559	Y	119°(124.8°)	3.6	-	-	-230	-	ARL	RNAV 1
DF	SB710	-	-	-	R	-	-	-	-	RNAV 1
TF	SB705	-	268°(273.8°)	14.7	-	-	-	-	-	RNAV 1
TF	PETEV	-	267°(273.4°)	14.0	-	-	-	-	-	RNAV 1

SID instruction: Climb on track 119° to SB559 (max IAS 230 kt) – SB710 – SB705 – PETEV.**120.155**

ACFT unable to follow RNAV SID: Climb on track 119° to SB DME 4.3 (max IAS 230 kt). Turn right to track 220°. Expect radar vectors to PETEV.

RESNA 5W

Path Term	Waypoint Identifier	Fly-over	Course °M(°T)	Dist (NM)	Turn Dir	Rest Alts (ft AMSL)	Speed Limits (kt)	VPA/ RDH (°/ft)	Rec Navaid	Navigation Specification
CF	SB559	Y	119°(124.8°)	3.6	-	-	-230	-	ARL	RNAV 1
DF	SB451	-	-	-	L	-	-	-	-	RNAV 1
TF	TOVRI	-	030°(035.6°)	25.4	-	-	-	-	-	RNAV 1
TF	RESNA	-	323°(329.3°)	43.3	-	-	-	-	-	RNAV 1

SID instruction: Climb on track 119° to SB559 (max IAS 230 kt) – SB451 – TOVRI – RESNA. **130.330**

ACFT unable to follow RNAV SID: Climb on track 119° to SB DME 4.3 (max IAS 230 kt). Turn left to track 030°. Expect radar vectors to RESNA.

TINKA 4W

Path Term	Waypoint Identifier	Fly-over	Course °M(°T)	Dist (NM)	Turn Dir	Rest Alts (ft AMSL)	Speed Limits (kt)	VPA/ RDH (°/ft)	Rec Navaid	Navigation Specification
CF	SB559	Y	119°(124.8°)	3.6	-	-	-230	-	ARL	RNAV 1
DF	SB710	-	-	-	R	-	-	-	-	RNAV 1
TF	SB705	-	268°(273.8°)	14.7	-	-	-	-	-	RNAV 1
TF	PETEV	-	267°(273.4°)	14.0	-	-	-	-	-	RNAV 1
TF	TINKA	-	264°(270.0°)	22.1	-	-	-	-	-	RNAV 1

SID instruction: Climb on track 119° to SB559 (max IAS 230 kt) – SB710 – SB705 – PETEV – TINKA. **120.155**

ACFT unable to follow RNAV SID: Climb on track 119° to SB DME 4.3 (max IAS 230 kt). Turn right to track 220°. Expect radar vectors to TINKA.

TOVRI 5W

Path Term	Waypoint Identifier	Fly-over	Course °M(°T)	Dist (NM)	Turn Dir	Rest Alts (ft AMSL)	Speed Limits (kt)	VPA/ RDH (°/ft)	Rec Navaid	Navigation Specification
CF	SB559	Y	119°(124.8°)	3.6	-	-	-230	-	ARL	RNAV 1
DF	SB451	-	-	-	L	-	-	-	-	RNAV 1
TF	TOVRI	-	030°(035.6°)	25.4	-	-	-	-	-	RNAV 1

SID instruction: Climb on track 119° to SB559 (max IAS 230 kt) – SB451 – TOVRI. **130.330**

ACFT unable to follow RNAV SID: Climb on track 119° to SB DME 4.3 (max IAS 230 kt). Turn left to track 030°. Expect radar vectors to TOVRI.

TRS 4W

Path Term	Waypoint Identifier	Fly-over	Course °M(°T)	Dist (NM)	Turn Dir	Rest Alts (ft AMSL)	Speed Limits (kt)	VPA/ RDH (°/ft)	Rec Navaid	Navigation Specification
CF	SB559	Y	119°(124.8°)	3.6	-	-	-230	-	ARL	RNAV 1
DF	SB710	-	-	-	R	-	-	-	-	RNAV 1
TF	TRS	-	217°(223.4°)	19.9	-	-	-	-	-	RNAV 1

SID instruction: Climb on track 119° to SB559 (max IAS 230 kt) – SB710 – TRS. **120.155**

ACFT unable to follow RNAV SID: Climb on track 119° to SB DME 4.3 (max IAS 230 kt). Turn right to track 220°. Expect radar vectors to TRS.